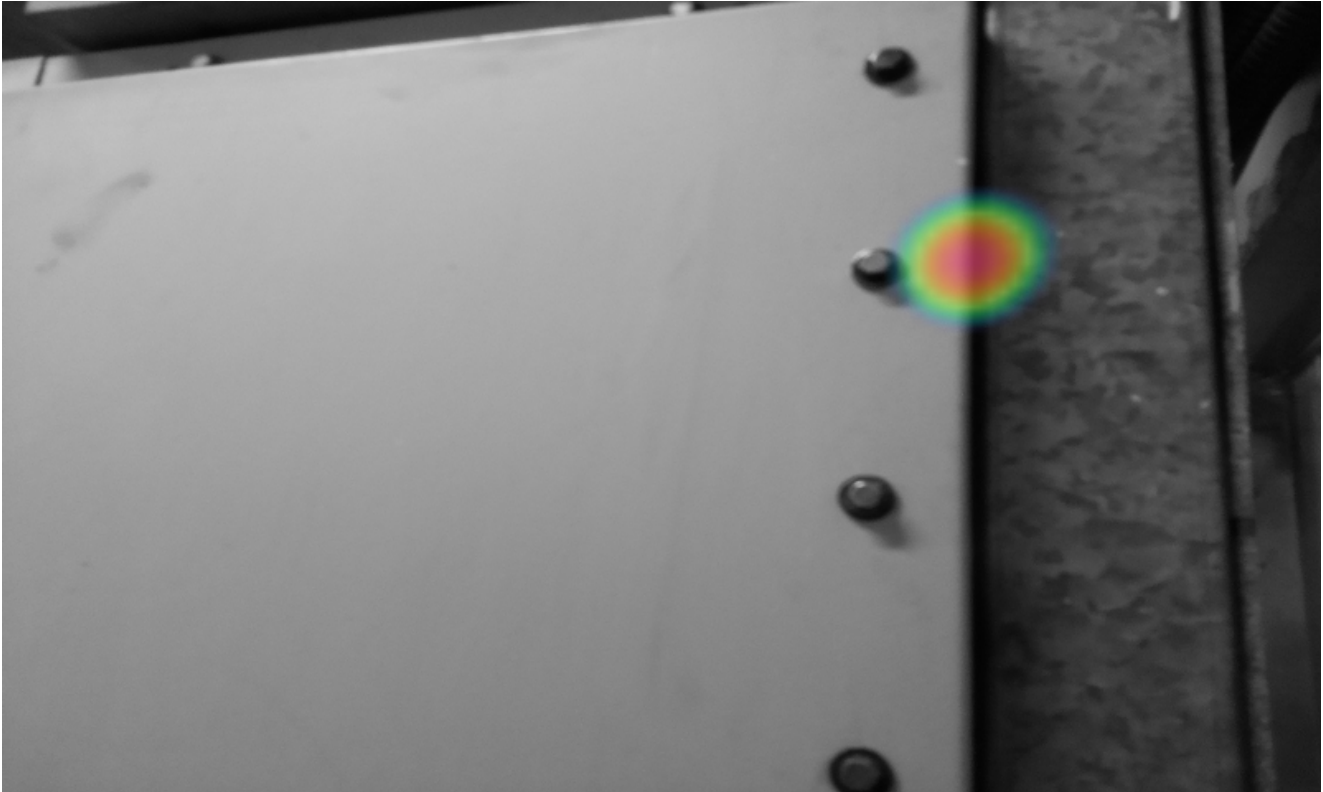
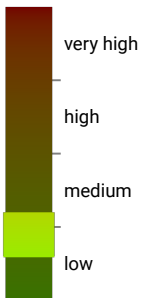


Partial Discharge Report

Snapshots	1
Minimum level	30.3 dB
Maximum level	30.3 dB
Snapshots without results	0



Severity



Description

This is classified as corona, i.e., partial discharge into air. In most cases, corona is harmless.



Recommendation

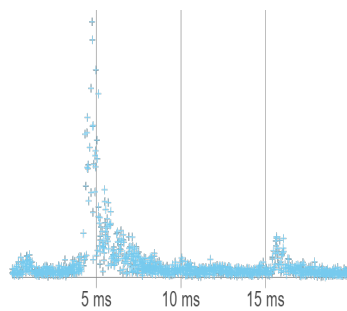
Typically no action required unless power loss, audible noise, electromagnetic interference, or deterioration of nearby polymer insulators is a problem.

Properties

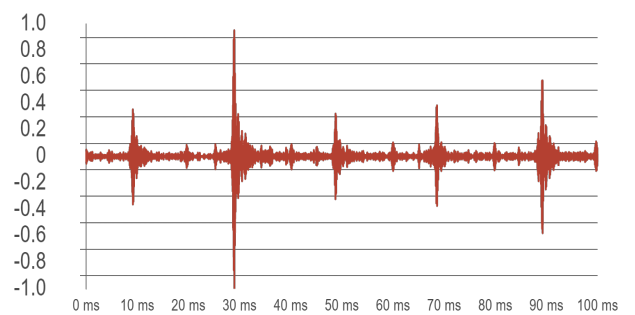
Level	30.3 dB
Created date	18.12.2020
Device	AC130033
Device Label	AC130033_00028_201218_0313_0028
Distance	5 m
Voltage	11.4 kV
Location	switchgear

Partial discharge type PRPD

- negative corona 
- positive and negative corona 
- floating discharge
- surface or internal discharge



Waveform



Comments