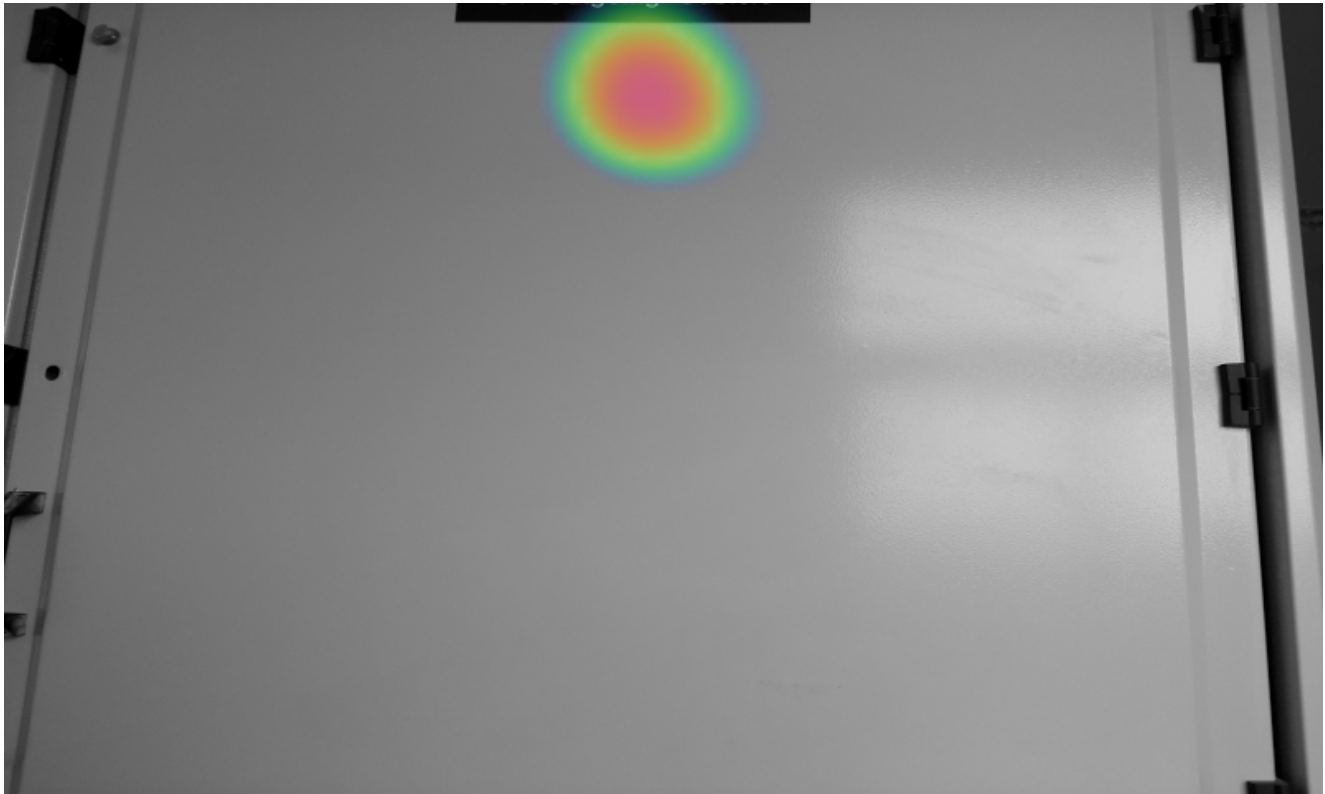
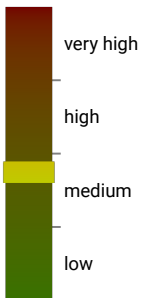


Partial Discharge Report

Snapshots	7
Minimum level	6.7 dB
Maximum level	23.1 dB
Snapshots without results	0



Severity



Description
This is classified as a surface or internal discharge. At this stage, the discharge appears to be relatively weak, but it will progress over time and might eventually lead to complete insulation breakdown.

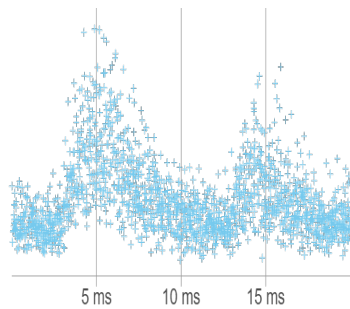
Recommendation
Periodic inspection.

Properties

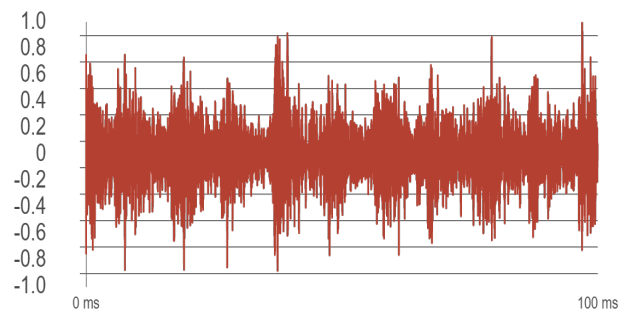
Level	6.7 dB
Created date	9.3.2021
Device	AC130033
Device Label	AC130033_00016_210309_0947_0016
Distance	0.5 m
Voltage	22 kV
Location	switchgear

Partial discharge type PRPD

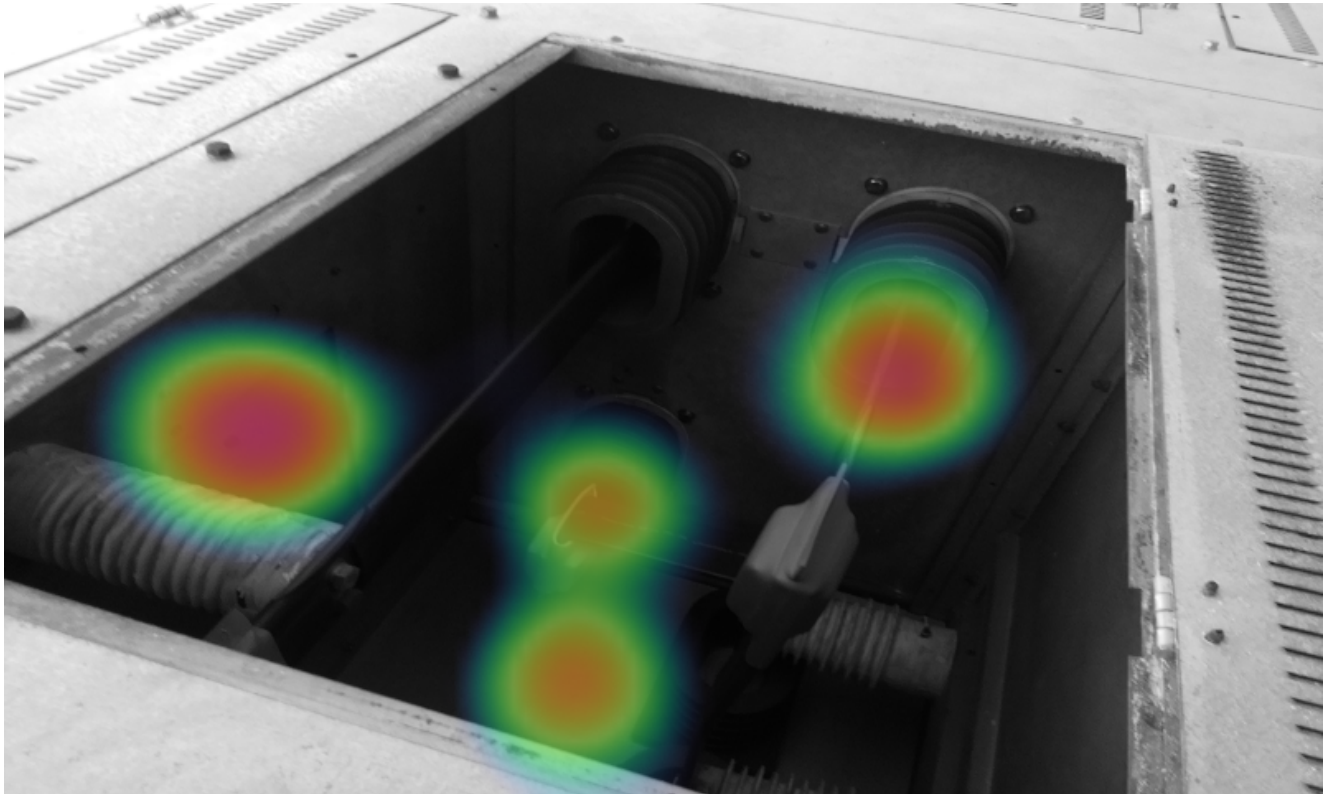
- negative corona
- positive and negative corona
- floating discharge
- surface or internal discharge



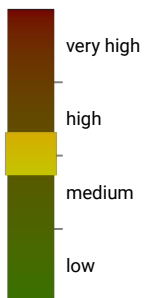
Waveform



Comments



Severity



Description
This is classified as a surface or internal discharge. At this stage, the discharge appears to be relatively weak, but it will progress over time and might eventually lead to complete insulation breakdown.

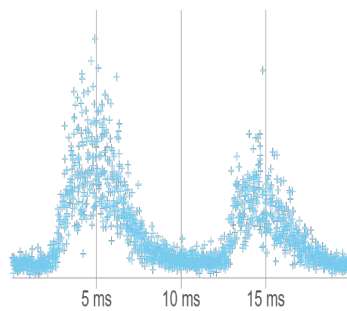
Recommendation
Periodic inspection.

Properties

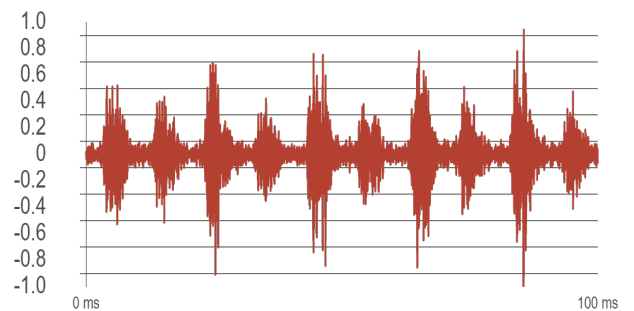
Level	21.2 dB
Created date	9.3.2021
Device	AC130033
Device Label	AC130033_00017_210309_0950_0017
Distance	0.5 m
Voltage	22 kV
Location	switchgear

Partial discharge type PRPD

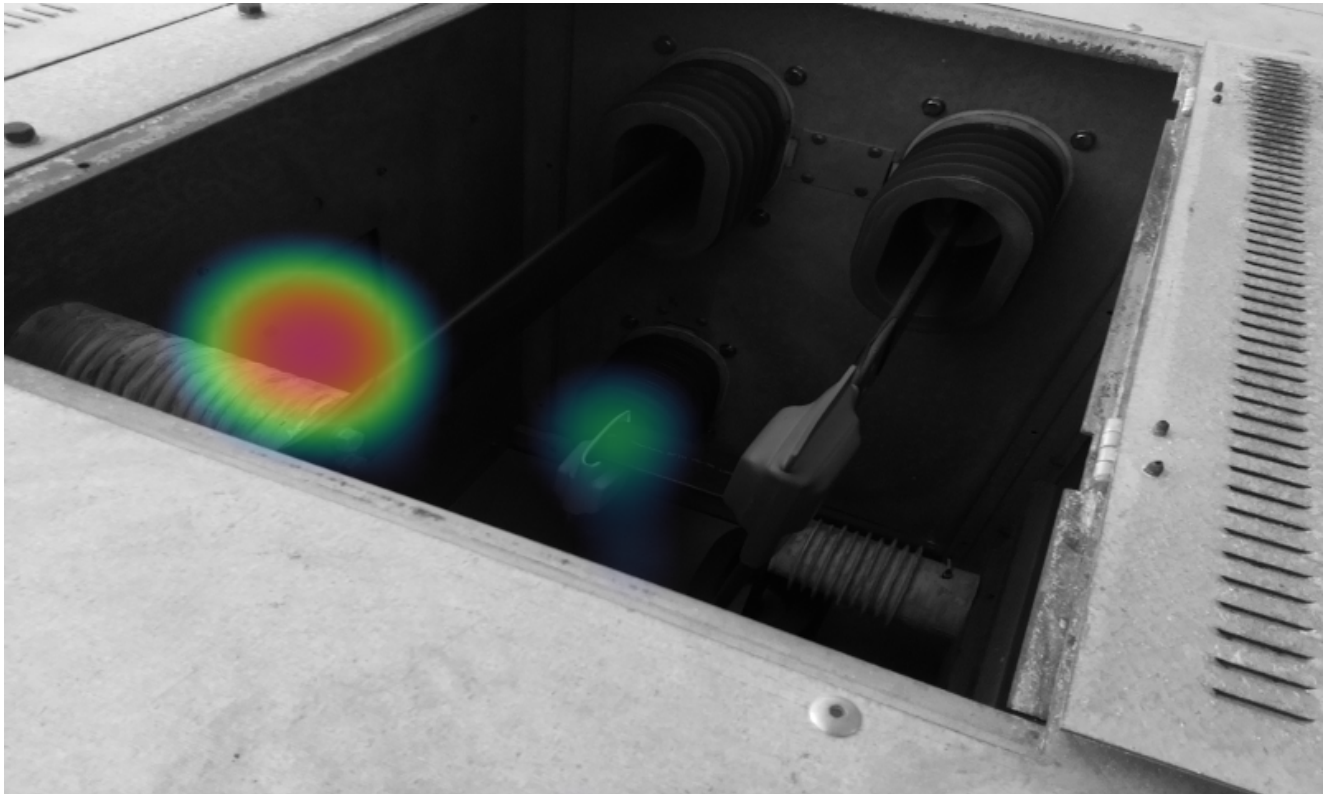
- negative corona
- positive and negative corona
- floating discharge
- surface or internal discharge



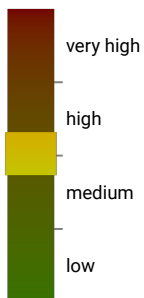
Waveform



Comments



Severity



Description
This is classified as a surface or internal discharge. At this stage, the discharge appears to be relatively weak, but it will progress over time and might eventually lead to complete insulation breakdown.

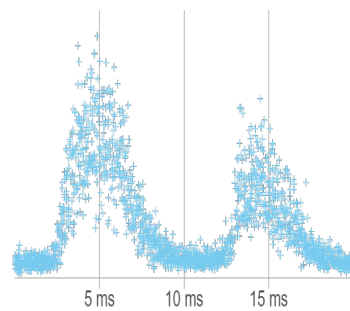
Recommendation
Periodic inspection.

Properties

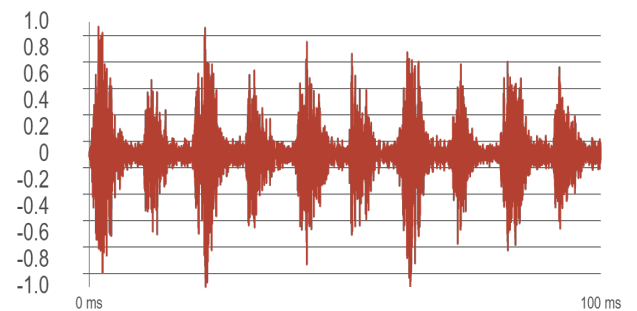
Level	22.3 dB
Created date	9.3.2021
Device	AC130033
Device Label	AC130033_00018_210309_0951_0018
Distance	0.5 m
Voltage	22 kV
Location	switchgear

Partial discharge type PRPD

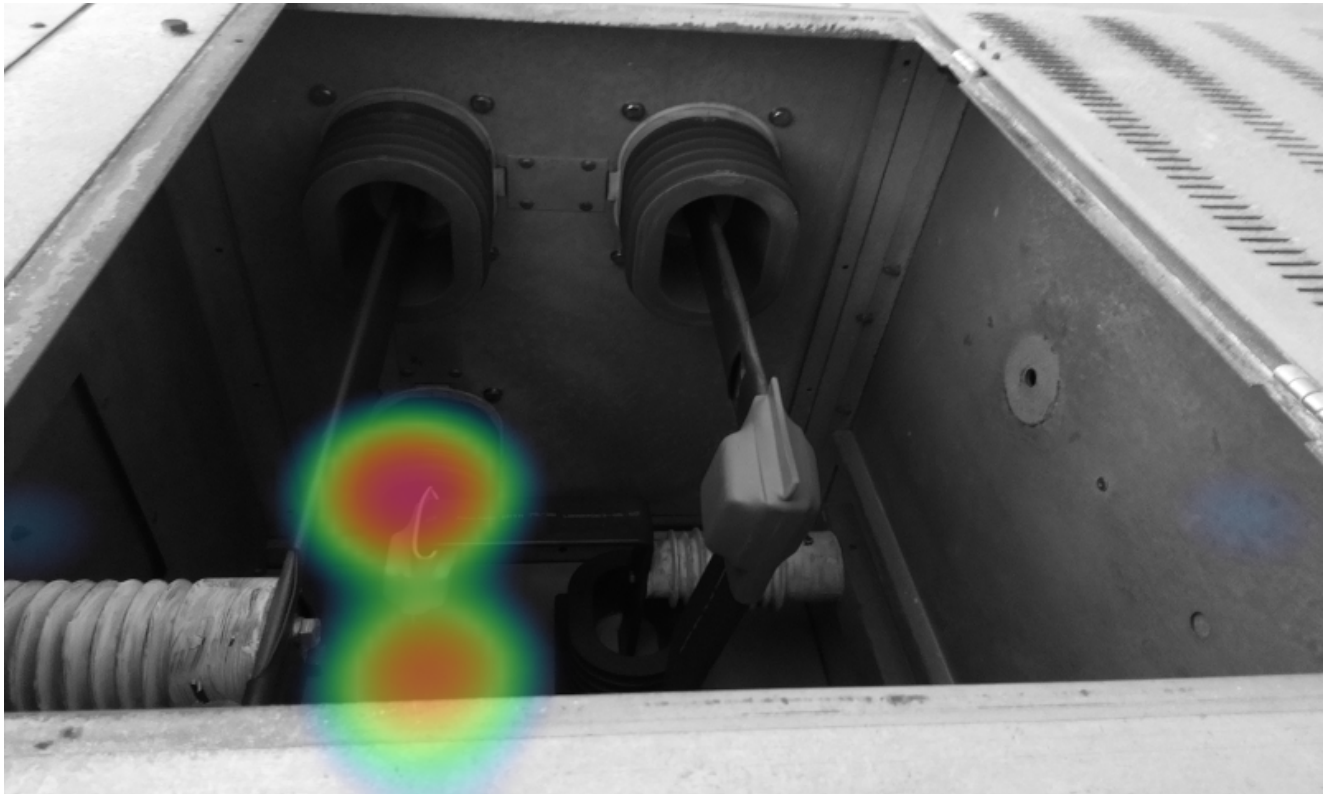
- negative corona
- positive and negative corona
- floating discharge
- surface or internal discharge



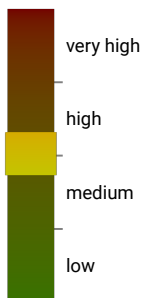
Waveform



Comments



Severity



Description
This is classified as a surface or internal discharge. At this stage, the discharge appears to be relatively weak, but it will progress over time and might eventually lead to complete insulation breakdown.

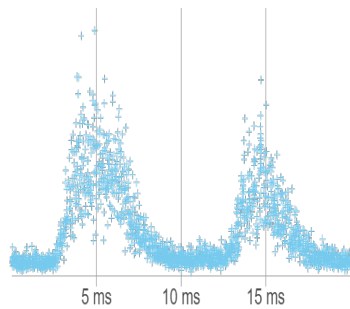
Recommendation
Periodic inspection.

Properties

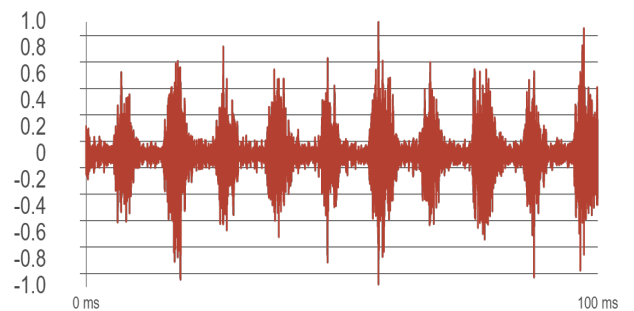
Level	22.4 dB
Created date	9.3.2021
Device	AC130033
Device Label	AC130033_00019_210309_0951_0019
Distance	0.5 m
Voltage	22 kV
Location	switchgear

Partial discharge type PRPD

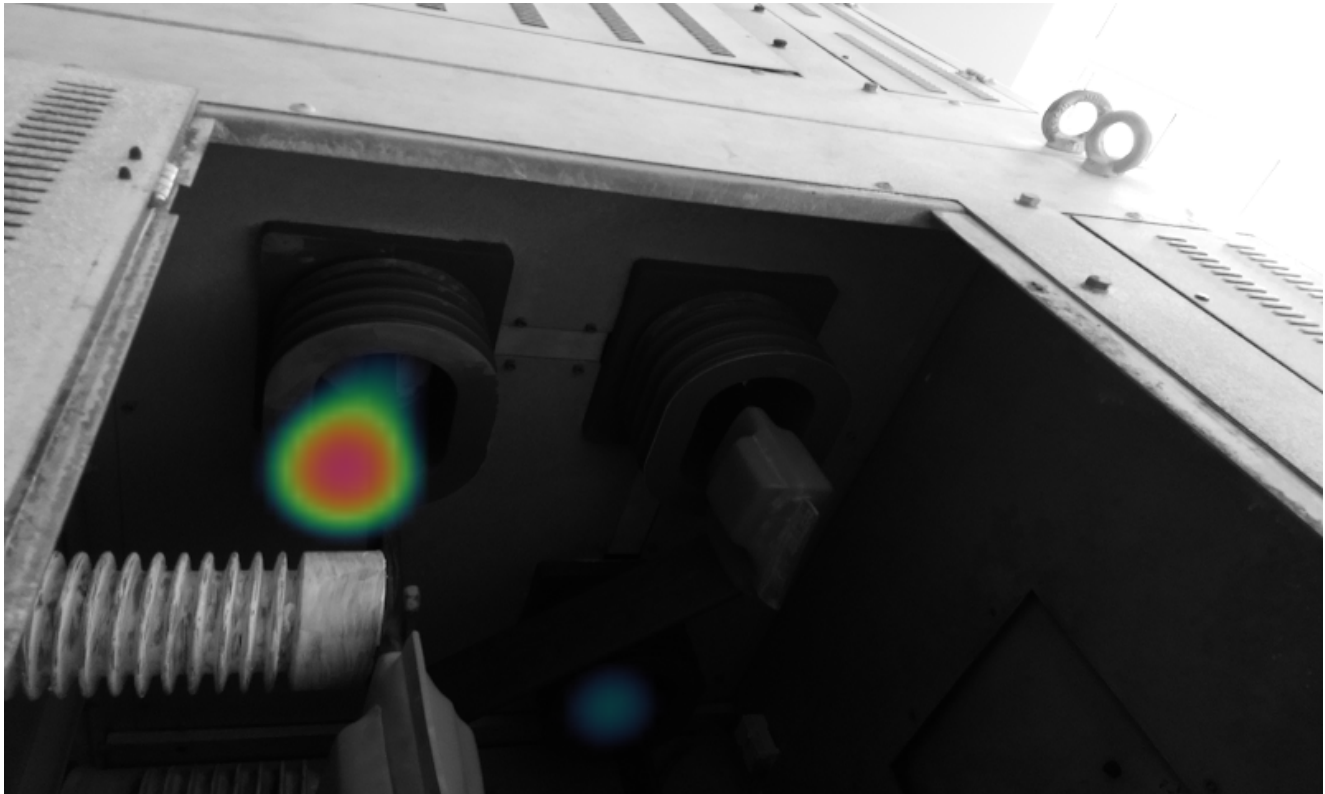
- negative corona
- positive and negative corona
- floating discharge
- surface or internal discharge



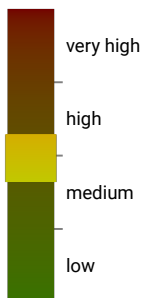
Waveform



Comments



Severity



Description
This is classified as a surface or internal discharge. At this stage, the discharge appears to be relatively weak, but it will progress over time and might eventually lead to complete insulation breakdown.

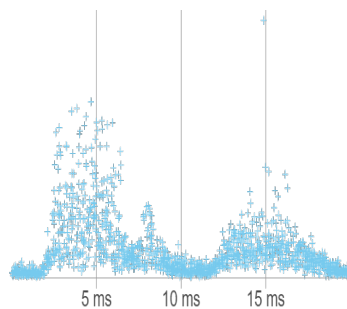
Recommendation
Periodic inspection.

Properties

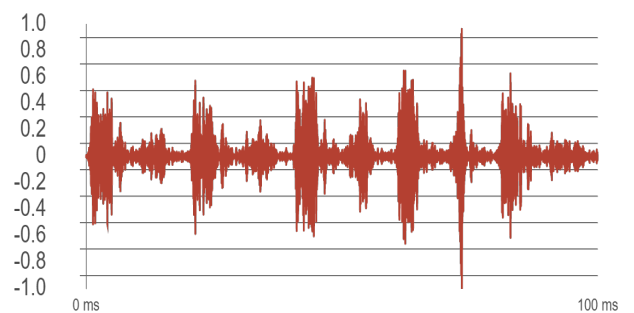
Level	23.1 dB
Created date	9.3.2021
Device	AC130033
Device Label	AC130033_00020_210309_1026_0020
Distance	0.5 m
Voltage	22 kV
Location	support insulator

Partial discharge type PRPD

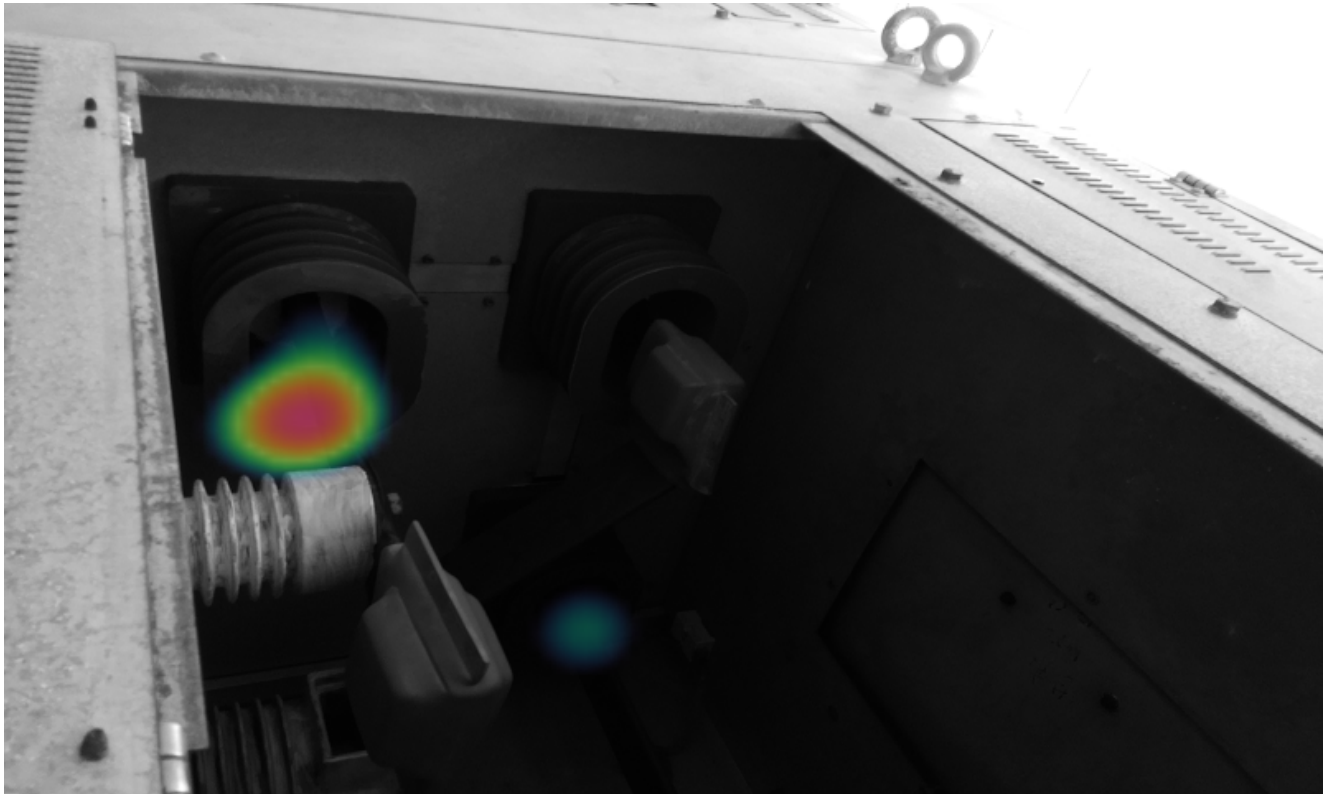
- negative corona
- positive and negative corona
- floating discharge
- surface or internal discharge



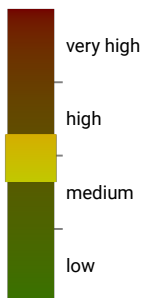
Waveform



Comments



Severity



Description
This is classified as a surface or internal discharge. At this stage, the discharge appears to be relatively weak, but it will progress over time and might eventually lead to complete insulation breakdown.

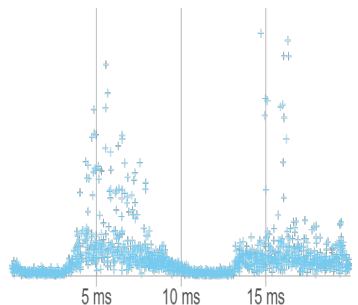
Recommendation
Periodic inspection.

Properties

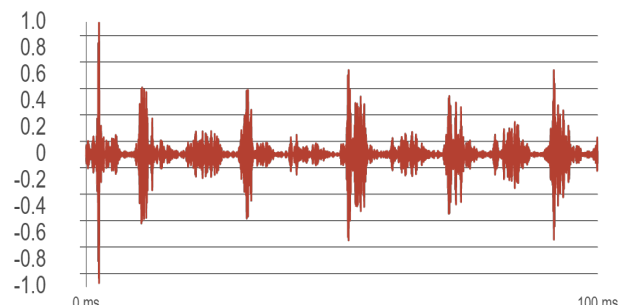
Level	20.5 dB
Created date	9.3.2021
Device	AC130033
Device Label	AC130033_00021_210309_1028_0021
Distance	0.5 m
Voltage	22 kV
Location	support insulator

Partial discharge type PRPD

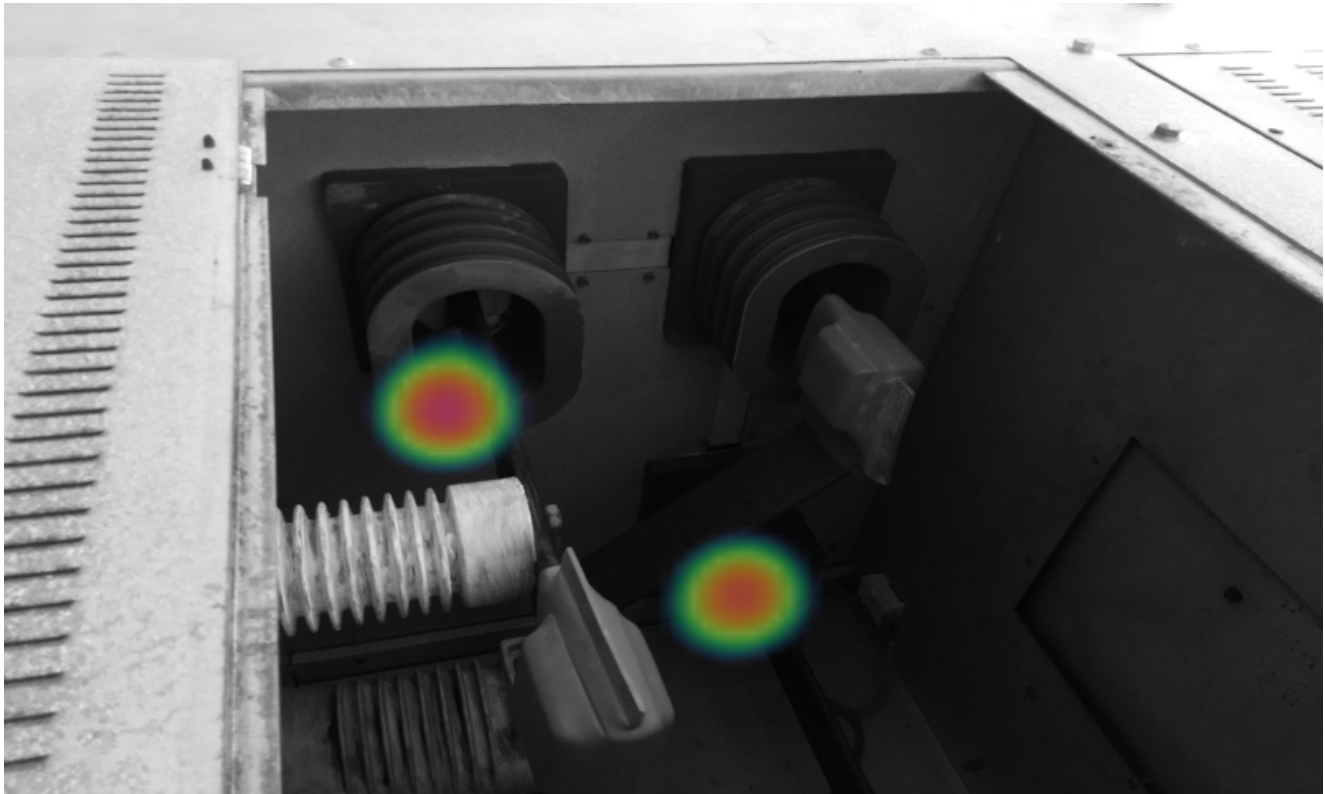
- negative corona
- positive and negative corona
- floating discharge
- surface or internal discharge



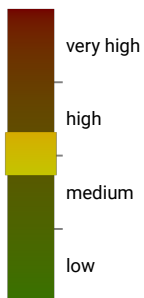
Waveform



Comments



Severity



Description
This is classified as a surface or internal discharge. At this stage, the discharge appears to be relatively weak, but it will progress over time and might eventually lead to complete insulation breakdown.

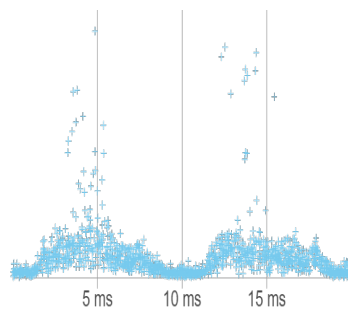
Recommendation
Periodic inspection.

Properties

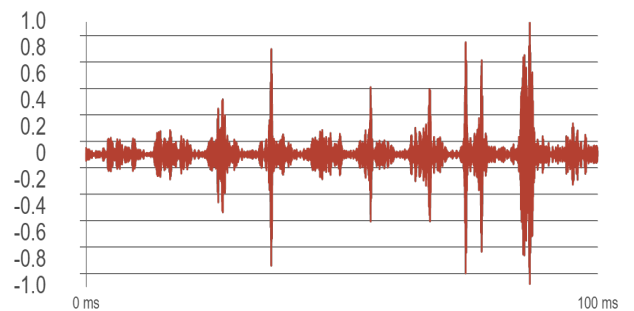
Level	19.6 dB
Created date	9.3.2021
Device	AC130033
Device Label	AC130033_00022_210309_1051_0022
Distance	0.5 m
Voltage	22 kV
Location	switchgear

Partial discharge type PRPD

- negative corona
- positive and negative corona
- floating discharge
- surface or internal discharge



Waveform



Comments